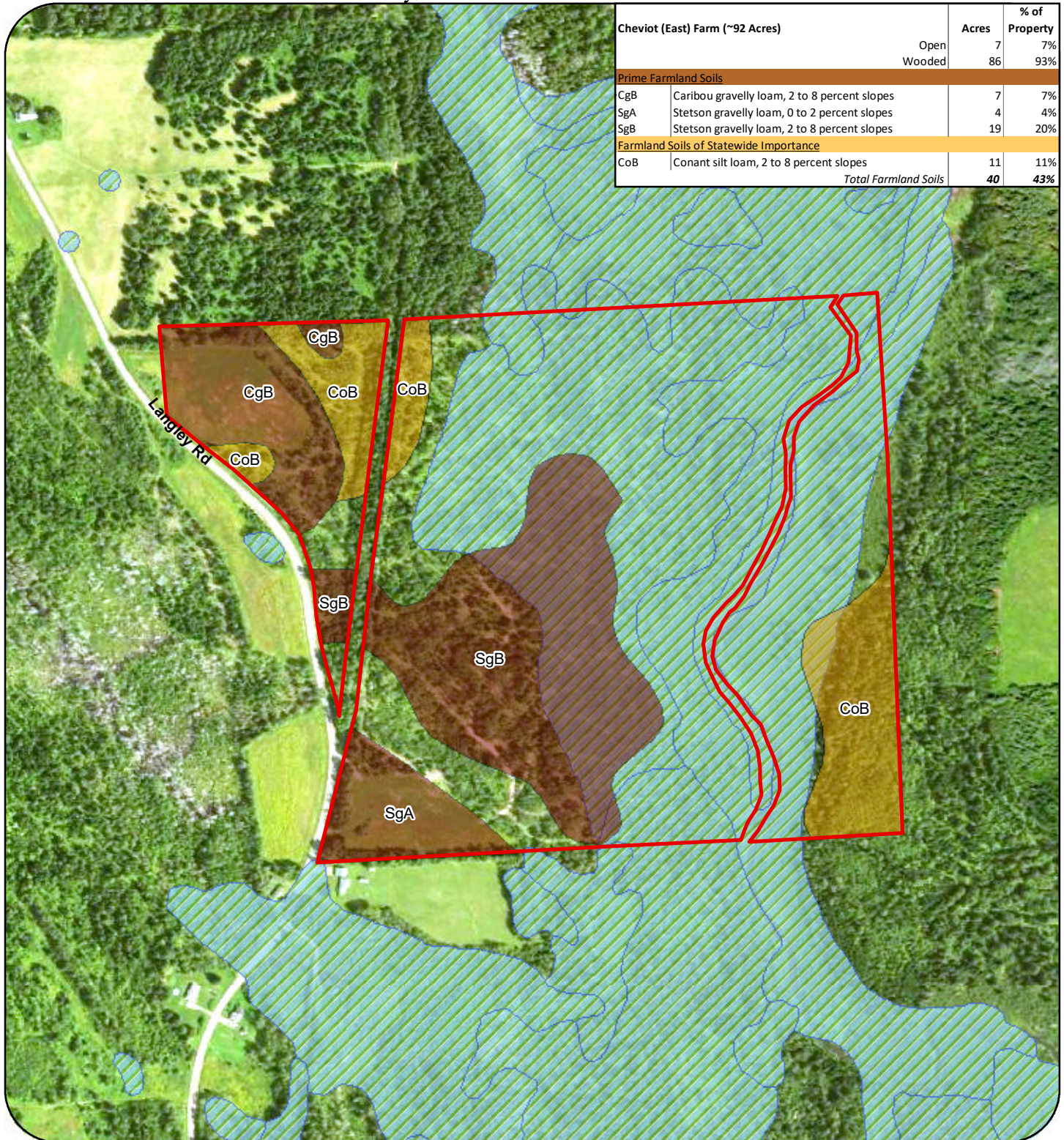


# Cheviot (East) Farm (~92 Acres)

# Soils Map

Woodland, Aroostook County, Maine



Cheviot (East) Farm (~92 Acres)		Acres	% of Property
	Open	7	7%
	Wooded	86	93%
<b>Prime Farmland Soils</b>			
CgB	Caribou gravelly loam, 2 to 8 percent slopes	7	7%
SgA	Stetson gravelly loam, 0 to 2 percent slopes	4	4%
SgB	Stetson gravelly loam, 2 to 8 percent slopes	19	20%
<b>Farmland Soils of Statewide Importance</b>			
CoB	Conant silt loam, 2 to 8 percent slopes	11	11%
<i>Total Farmland Soils</i>		<b>40</b>	<b>43%</b>

- Property Boundary
- Prime Farmland Soils
- Wetlands
- Farmland Soils of Statewide Importance



*Note: Information on this map is provided for purposes of discussion and visualization only; mapped boundaries and acreages are approximate.*



0 500 1,000 Feet

Created by Caitlin Hopkins, MFT, 05/08/2017.  
Base Data Source: Maine Office of GIS, NAIP 2015, NRCS Soils.